

# QUICK START GUIDE

## FIRMWARE UPDATE VIA MIRA SOFTWARE

### APPLICABLE TO ALL PATH MEDICAL DEVICES

Before beginning a Firmware update for your Sentiero device through MIRA, please make sure that your MIRA software version is up to date. To get the latest version of MIRA software on your PC, you can find a link to the current version at this address:



This will take you to the PATH MEDICAL website downloads page, which is pictured below in Figure 1.

Click on the underlined word [download](#) to access the link to download Mira software. This may take several minutes.

**IMPORTANT:** If you are installing Mira for the first time, please **open Mira software first and login** before completing the following steps to integrate the firmware file. After the software opens for the first time, it is ready to integrate service files.

### Further download information

Mira revision 1.6.4 (build 6471) including Senti/Sentiero Firmware revision 2.1 (build 8509) is available for [download](#) (complete setup compressed)

Note: Please download the file to a known location (right mouse button in most browsers), then execute the file.

The archive will self extract and automatically start the installer.

Please note that Mira requires one of the following operating systems: Windows Vista, Windows 7, Windows 8.x or Windows 10.

For first login, use the following default login information: **Login name:** admin, **Password:** 1234. After first login, please change the password.

Note: If you have problems downloading Mira, e.g. due to a slow internet connection, please contact [info@pathme.de](mailto:info@pathme.de) for receiving Mira on DVD or USB flash memory by mail.



Figure 1

# QUICK START GUIDE

## FIRMWARE UPDATE VIA MIRA SOFTWARE

### APPLICABLE TO ALL PATH MEDICAL DEVICES

---

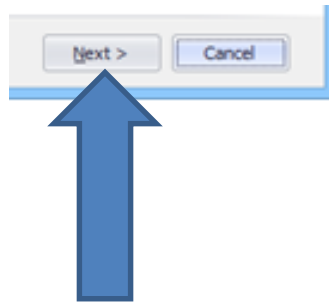
You will need the following items to perform a firmware upgrade using MIRA software:

Your Sentiero Device, USB cable to connect to the PC, PC with MIRA software installed.

Make sure that your Sentiero device is charged prior to updating.

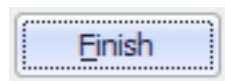
#### FIRMWARE UPDATE

- 1) When you click on [download](#), the latest version of MIRA, which contains the latest firmware, will be downloaded to your PC (this may take several minutes).
- 2) Follow the prompts to install MIRA on your PC, click on the Next button (Figure 2).



*Figure 2*

- 3) The Mira icon will be installed on your desktop. Click Finish (See Figure 3).



*Figure 3*

- 4) Connect the Sentiero Device to the PC with the appropriate USB cable connection (See above).

# QUICK START GUIDE

## FIRMWARE UPDATE VIA MIRA SOFTWARE

### APPLICABLE TO ALL PATH MEDICAL DEVICES

---

- 5) Switch on the device.
- 6) Double Click on the Mira Icon (Figure 4) to open the software.

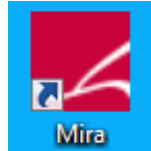


Figure 4

- 7) Enter Name: admin; enter Password: 1234, then click the Login button to enter the software (See Figure 5).  
(If you have Mira set to auto login, you can skip this step. If you are logged in under another user name, then log out and log in under admin profile.)

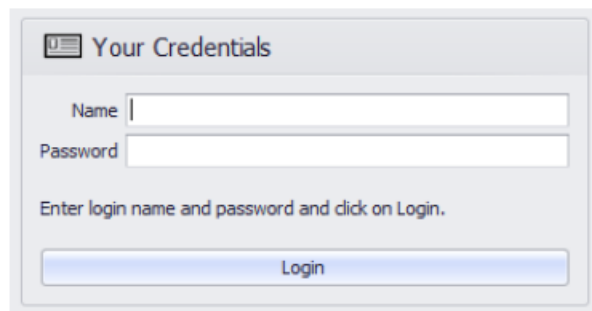
The image shows a login form titled 'Your Credentials'. It has two input fields: 'Name' and 'Password'. Below the fields is a blue button labeled 'Login'. The text 'Enter login name and password and click on Login.' is displayed below the password field.

Figure 5

- 8) After Mira opens, from the My Patients window, click on the Update icon as shown in Figure 6.

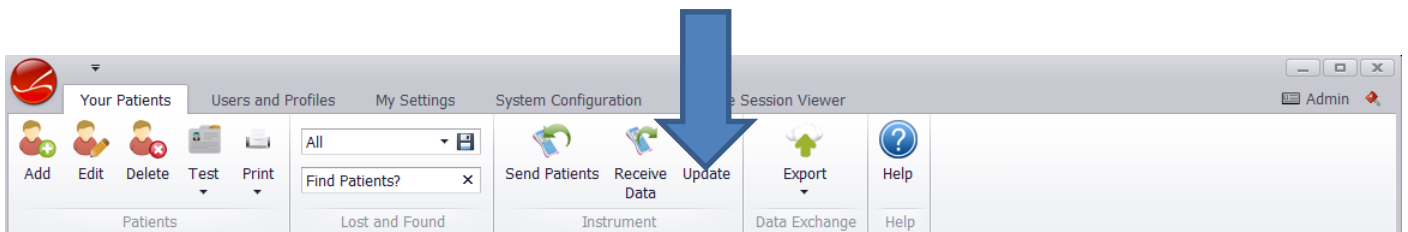


Figure 6

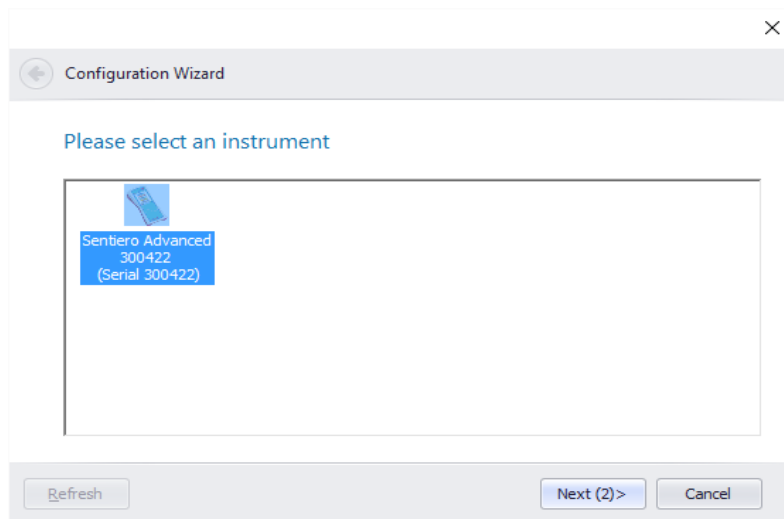
# QUICK START GUIDE

## FIRMWARE UPDATE VIA MIRA SOFTWARE

### APPLICABLE TO ALL PATH MEDICAL DEVICES

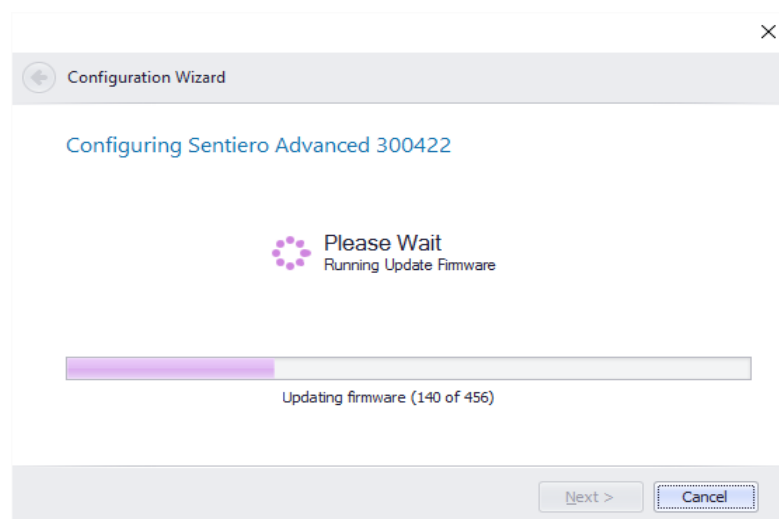
---

- 9) Select the device you want to update (Figure 7). Make sure that device is fully charged or that the charger is connected to the device.



*Figure 7*

- 10) The firmware update will start automatically (Figure 8)



*Figure 8*

# QUICK START GUIDE

## FIRMWARE UPDATE VIA MIRA SOFTWARE

### APPLICABLE TO ALL PATH MEDICAL DEVICES

---

11) Please wait until instrument completes firmware update (Figures 9 and 10)

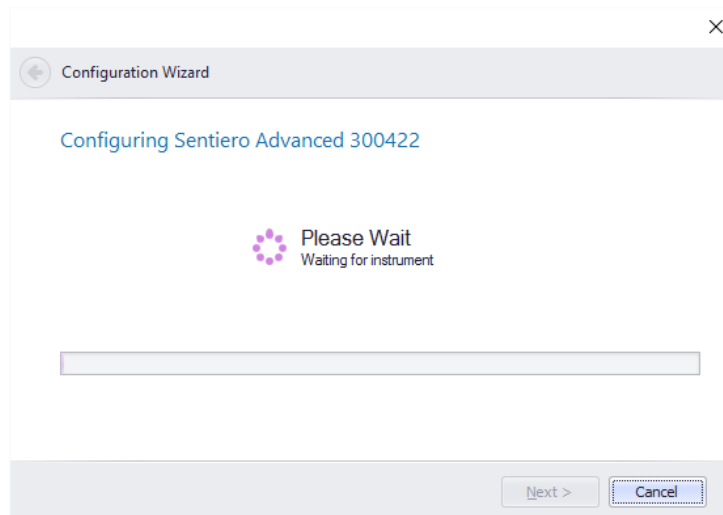


Figure 9



Figure 10

# QUICK START GUIDE

## FIRMWARE UPDATE VIA MIRA SOFTWARE

### APPLICABLE TO ALL PATH MEDICAL DEVICES

---

12) The configuration Wizard window will open and let you know that the new configuration has been sent to the device successfully (Figure 11).

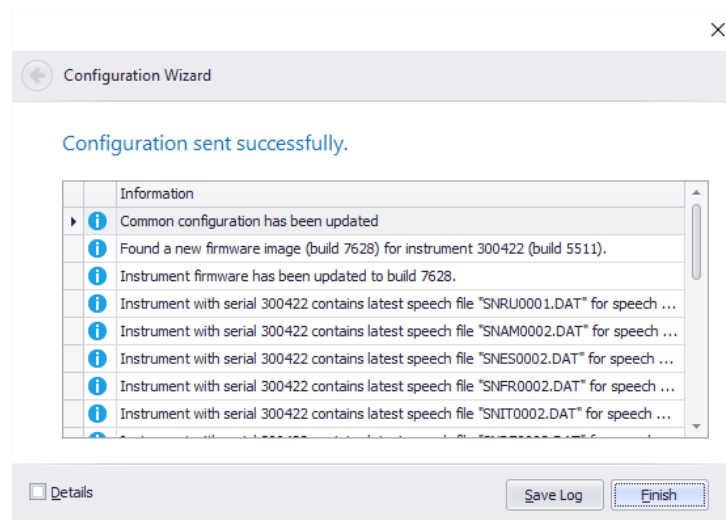


Figure 11

13) Click



You may now disconnect your device from the PC and USB cable

*Do NOT interrupt the update while it is in progress. A message will be displayed on the touch screen of the device showing the progress of the update. When it is complete, the device will reboot itself. After it is rebooted, it is updated and ready to use.*

Please contact your distributor or Technical Support if you need assistance with the firmware update

# QUICK START GUIDE

## FIRMWARE UPDATE VIA MIRA SOFTWARE

### APPLICABLE TO ALL PATH MEDICAL DEVICES

---

#### Quick Guide Information

Release date: 2017-01-11  
Revision: 02  
Valid from: Firmware Rev. 2.1, Mira PC Software Rev. 1.6.4  
Applies to: Models: SOD100497 and SOH100098, all web descriptions

All mentioned items, products, brands and trademarks are registered or owned by the mentioned companies.

All information, illustrations, and specifications provided within this manual are based on the latest product information available at the time of publication. PATH medical reserves the right to make changes at any time without notice.

Please note that not all products displayed on our webpage or advertising materials are available in all territories. Please contact your local distributor or PATH medical for further information.

The latest revision of the Quick Start Guide is available online at [www.pathme.de/download](http://www.pathme.de/download).

Errors and omissions excepted.

#### Copyright Notice

No part of this manual may be reproduced, translated, stored, or transmitted, in any form or by any means, electronic, mechanical, photocopying, recording, or otherwise, without the prior written consent of PATH medical GmbH.

Copyright © 2016 PATH medical GmbH

PATH medical GmbH  
Landsberger Straße 65  
82110 Germering  
Germany

Tel.: +49 89 800 76 502 Fax: +49 89 800 76 503 Internet: [www.pathme.de](http://www.pathme.de)

CE  
0124