

QUICK START GUIDE

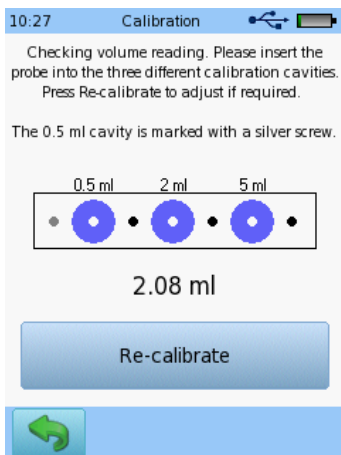
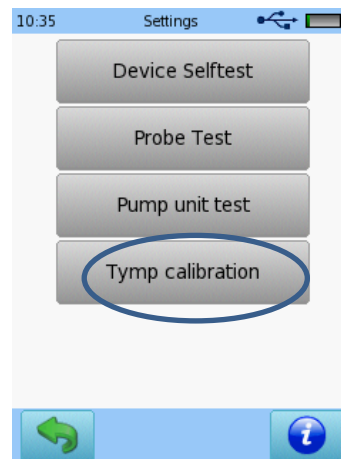
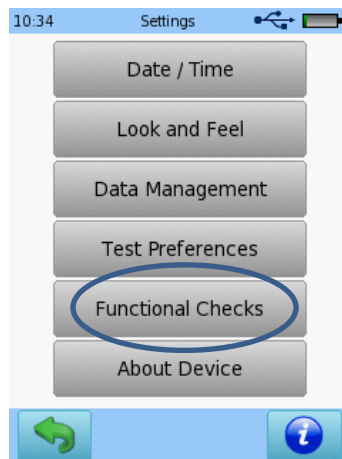
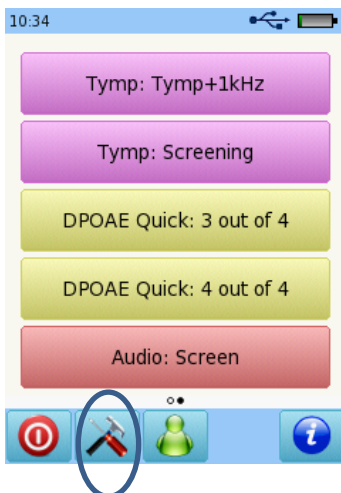
HOW TO CHECK OR RE-CALIBRATE TYMP ECV CALIBRATION

To check or re-calibrate Tymp ECV Calibration:



Connect the red connector from the tymp probe cable to the red jack on the back of the desktop device. ALSO, connect the clear tubing (air connector) securely to the pump outlet to the right of the blue connector on the back of the device with a gentle twisting motion until it is finger tight. DO NOT overtighten. If your device is new, you will need to remove the white cap

Go to Settings -> Functional Checks -> Tymp calibration



You will be in "checking" mode. You can now insert the probe into any of the 3 cavities to check the current volume reading. Please make sure to use the probe tip

with the blue dot  or the white probe tip 

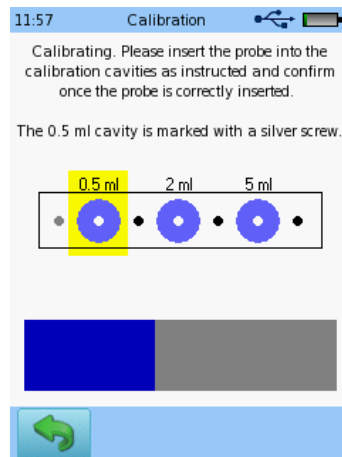
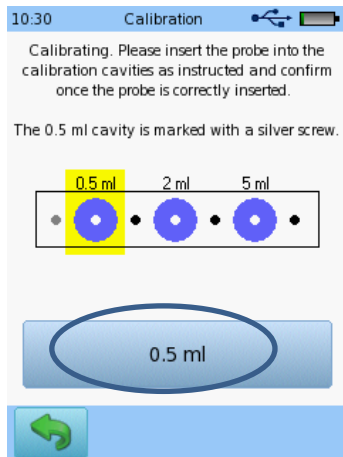
If the readings are fine (standards allow 5% or 0.1 ml, whichever is greater), simply press back.

QUICK START GUIDE

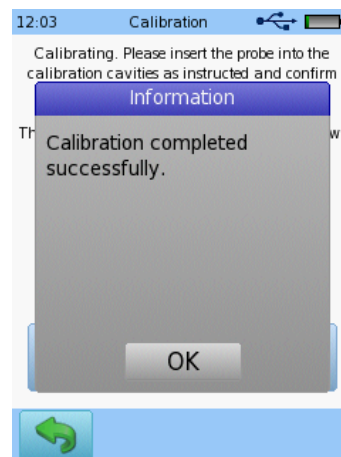
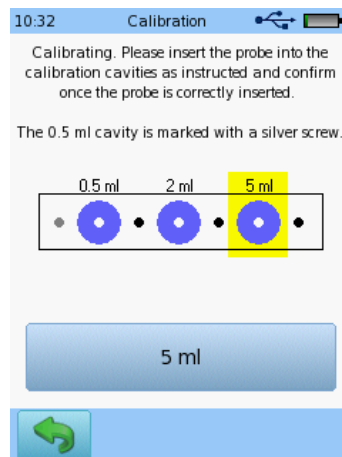
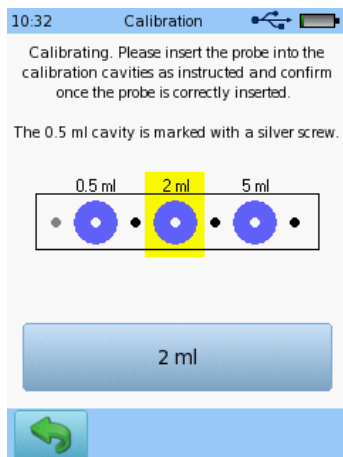
HOW TO CHECK OR RE-CALIBRATE TYMP ECV CALIBRATION

In case of larger deviations from the nominal volume, press Re-calibrate. If you choose to re-calibrate, the instrument will instruct you to place the probe into each of the three cavities one after another. Please insert the probe into the cavity as indicated on screen and confirm by pressing the button.

Please note that the silver screw of test cavity should be in the position as explained on screen.



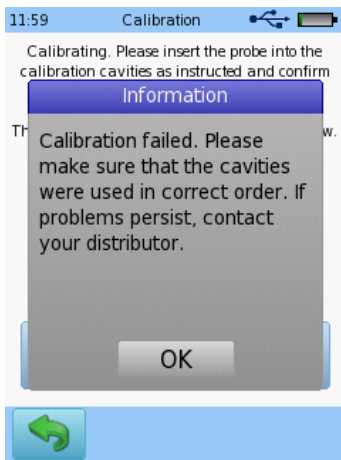
This procedure will repeat for all three cavities, and display a message upon success.



QUICK START GUIDE

HOW TO CHECK OR RE-CALIBRATE TYMP ECV CALIBRATION

If for any reason the calibration does not succeed, you will see this message.



Possible reasons for calibration fails are

- Cavities used in wrong order (check silver screw)
- Probe tip being blocked
- Shallow insertion of probe into test volumes
- Defective probe (perform a probe test)
- Use of wrong probe tip. Please make sure to use the probe tip marked with a blue dot as indicated on page 1.

QUICK START GUIDE

HOW TO CHECK OR RE-CALIBRATE TYMP ECV CALIBRATION

Quick Guide Information

Release date: 2019-04
Revision: 02
Valid from: Firmware Rev. 2.5, Mira PC Software Rev.2.0
Applies to: Models: SOD100497, all web descriptions

All mentioned items, products, brands and trademarks are registered or owned by the mentioned companies.

All information, illustrations, and specifications provided within this manual are based on the latest product information available at the time of publication. PATH medical reserves the right to make changes at any time without notice.

Please note that not all products displayed on our webpage or advertising materials are available in all territories. Please contact your local distributor or PATH medical for further information.

The latest revision of the Quick Start Guide is available online at www.pathme.de/download.

Errors and omissions excepted.

Copyright Notice

No part of this manual may be reproduced, translated, stored, or transmitted, in any form or by any means, electronic, mechanical, photocopying, recording, or otherwise, without the prior written consent of PATH medical GmbH.

Copyright © 2019 PATH medical GmbH

PATH medical GmbH
Landsberger Straße 65
82110 Germering
Germany
Tel.: +49 89 800 76 502 Fax: +49 89 800 76 503 Internet: www.pathme.de

CE
0124