

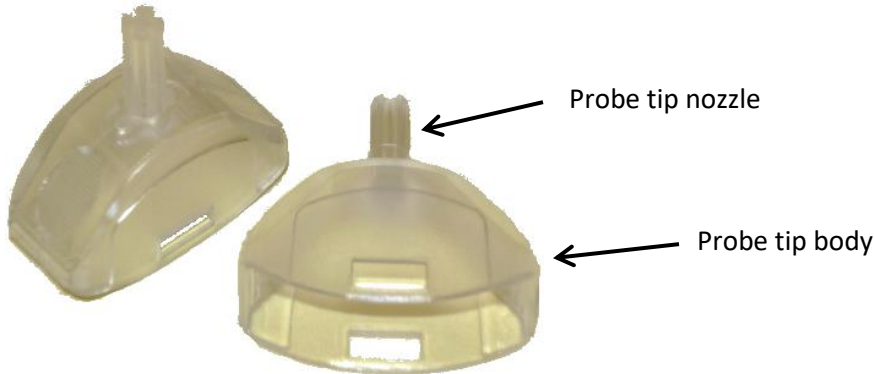
QUICK START GUIDE

PROBE TIP AND EAR TIP SELECTION

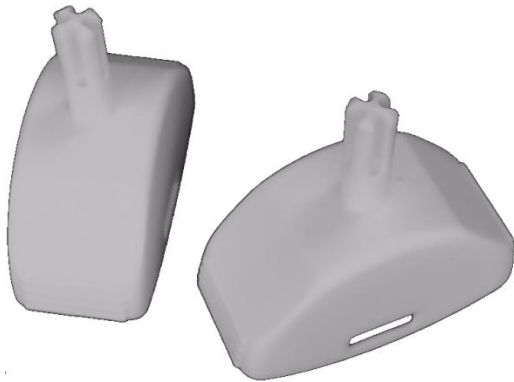
PROBE TIP SELECTION

Select an appropriate probe tip dependent on the subject's age and ear canal size. The following probe tips are available:

Probe tip **PT-A**: Select the transparent probe tip for **children and adults**.



Probe tip **PT-S**: Select the white probe tip for **newborns and infants**.



Please note that the two ear tips differ both in color and in size of the probe tip nozzle to which the ear tip is attached. The probe tip **PT-A** is transparent and features a larger nozzle, whereas the probe tip **PT-S** is white and features a smaller nozzle.

Ear tips are not interchangeable between the two sized probe tips, so only ear tips suited for the selected probe tip must be used.

QUICK START GUIDE

PROBE TIP AND EAR TIP SELECTION

EAR TIP SELECTION

Please select an ear tip suited to the chosen type of probe tip (PT-A or PT-S) and dependent on the subject's ear canal size. The following ear tips with different shapes and diameters are available:

EAR TIPS ET (PATH) AND PM (GRASON) FOR TRANSPARENT PROBE TIP PT-A:

Straight ear tips

ET-03 Ø 5 mm



Lamella ear tips

ET-10 Ø 6 – 9 mm



ET-13 Ø 5.6 – 11 mm



ET-11 Ø 7 – 16 mm



PM105 Ø 4 – 8 mm



PM107 Ø 5 – 11 mm



PM111 Ø 6 – 15 mm



Mushroom ear tips

PM006 Ø 6 mm



PM007 Ø 7 mm



PM008 Ø 8 mm



PM009 Ø 9 mm



PM010 Ø 10 mm



PM011 Ø 11 mm



PM012 Ø 12 mm



PM013 Ø 13 mm



PM014 Ø 14 mm



PM016 Ø 16 mm



PM018 Ø 18.5 mm



QUICK START GUIDE

PROBE TIP AND EAR TIP SELECTION

Mushroom ear tips (continued)

ET-20 Ø 14 mm



ET-21 Ø 18 mm



Foam ear tips

ET-16 Ø 7 – 10mm



ET-17 Ø 9 – 14 mm



ET-14 Ø 10 – 18 mm



Not suited for tympanometry

EAR TIPS **ET-S** FOR WHITE PROBE TIP **PT-S**:

Straight ear tips

ET-S01 Ø 3.7 mm



ET-S02 Ø 4 mm



ET-S03 Ø 4.5 mm



ET-S04 Ø 5 mm



Lamella ear tips

ET-S10 Ø 4 – 7 mm



Foam ear tips

ET-S11 Ø 6 – 8 mm



Please make sure that the selected ear tip properly fits into the ear canal. Once inserted, the ear tip should remain in the fitted position. Before inserting a foam tip, squeeze the foam. After inserting the foam tip wait a few seconds to allow the foam to extend. If leakage is indicated on the device screen when starting a test, reposition the ear tip in the ear canal and/or try another ear tip size or shape before restarting the test.

QUICK START GUIDE

PROBE TIP AND EAR TIP SELECTION

Quick Guide Information

Release date: 2020-10
Revision: 02
Applies to: Ear probes EP-TE, EP-DP, EP-VIP, EP-TY

All mentioned items, products, brands and trademarks are registered or owned by the mentioned companies.

All information, illustrations, and specifications provided within this manual are based on the latest product information available at the time of publication. PATH medical reserves the right to make changes at any time without notice.

Please note that not all products displayed on our webpage or advertising materials are available in all territories. Please contact your local distributor or PATH medical for further information.

The latest revision of the Quick Start Guide is available online at www.pathme.de/download.

Errors and omissions excepted.

Copyright Notice

No part of this manual may be reproduced, translated, stored, or transmitted, in any form or by any means, electronic, mechanical, photocopying, recording, or otherwise, without the prior written consent of PATH medical GmbH.

Copyright © 2020 PATH medical GmbH

PATH MEDICAL GmbH
Landsberger Straße 65
82110 Germering
Germany

Tel.: +49 89 800 76 502 Fax: +49 89 800 76 503 Internet: www.pathme.de


0124